

'Unlocking Broomfield Park for the Community'

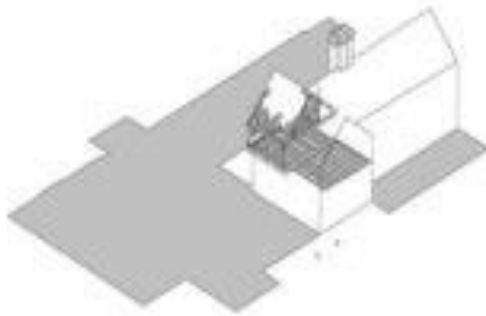
Enfield Heritage Forum
12th September 5:30 – 7 pm

www.enfield.gov.uk

Striving for excellence



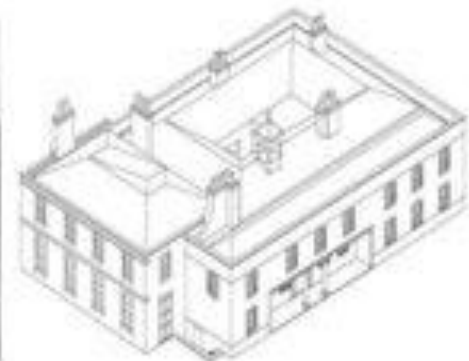
History of the House



Broomfield House c1562



c1726



c1820



1905



1976



2012

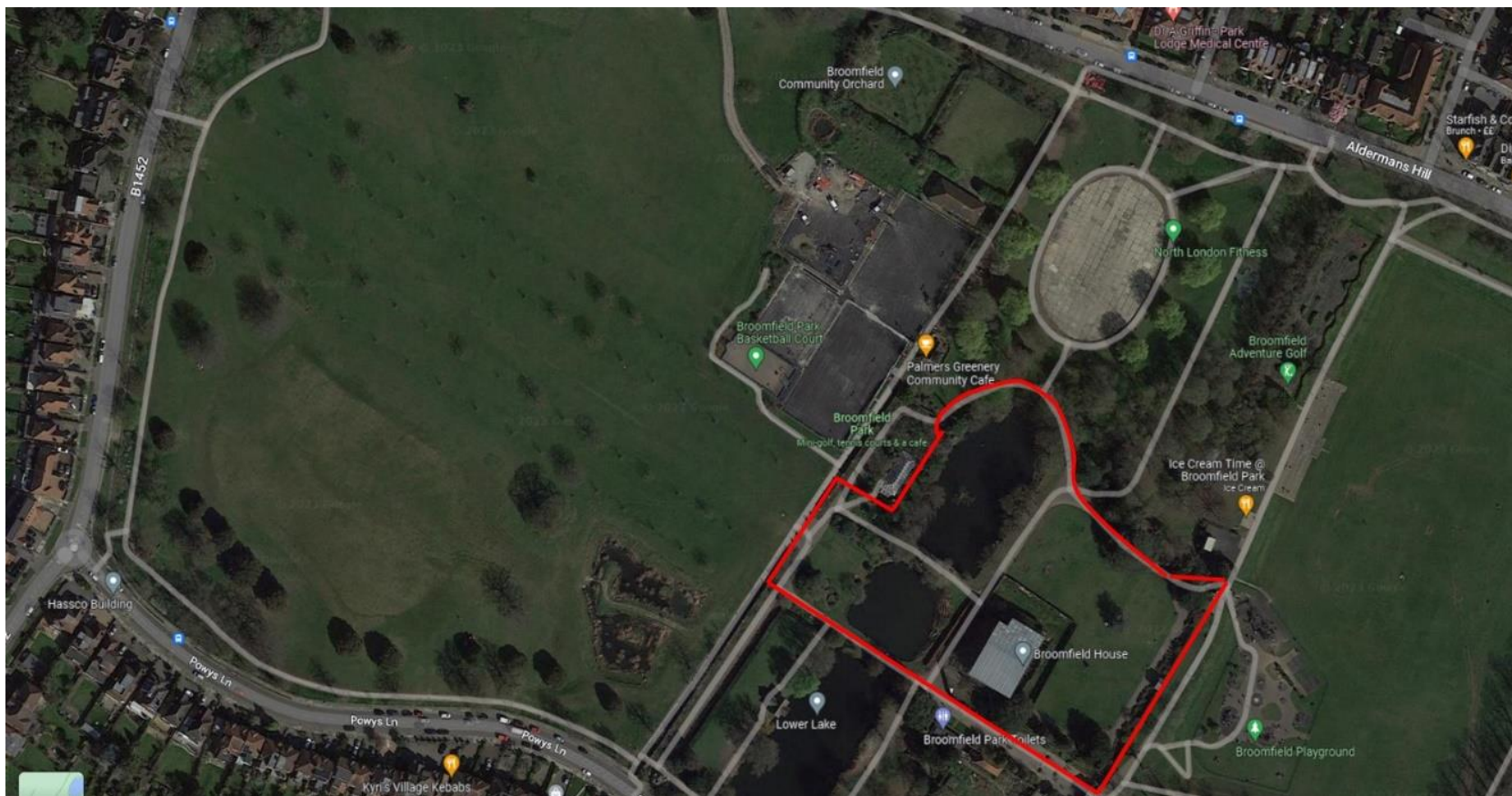
Introduction: Broomfield House and Park



Project Vision

- Becomes a flagship park for North London, known for its historic landscape and heritage assets, natural environment, and community provision.
- Provides opportunities for Enfield borough communities to thrive and learn about its history and to volunteer and participate in its upkeep and activation.
- Inspires residents and visitors to live ecologically and sustainably, with community growing spaces and orchards, flourishing wildlife, and beautiful gardens.

Unlocking Broomfield Park for the Community



Project Timeline

Round One application submitted – 17th August 2023

- Decision expected from National Lottery Heritage Fund November 2023
- Start the Development Phase February 2024 – this will last two years
- Deadline for Round Two application – November 2025
- Decision made by National Lottery Heritage Fund – March 2026
- Start the Delivery Phase – May 2026
- Works complete – July 2028

Project Plan

Development phase

- Procurement and team assembly
- Surveys
- Co-curation of memorialisation of house
- Community pilot activities
- Securing planning and statutory consent for proposals
- Fundraising and business planning

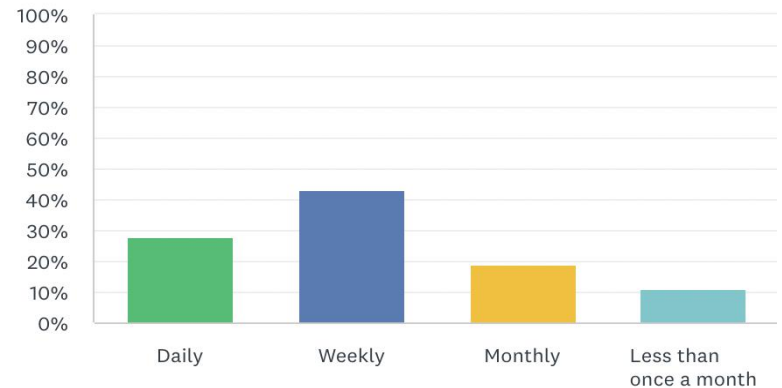
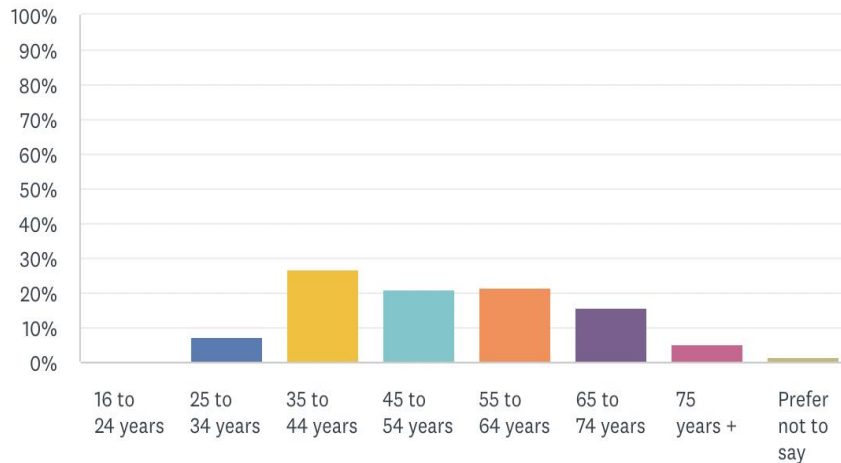


Delivery phase

- Dismantle Broomfield House
- Memorialise Broomfield House and reintegration into Park
- Works to the Upper and Middle Lakes
- Restoring and enhancing historic Baroque landscape
- Relocate salvaged material from Broomfield house
- Install interpretation and improve wayfinding
- Cultural and heritage events
- Evaluation

How Communities Have Been Involved So Far

1250 residents consulted!



Broomfield Word Cloud

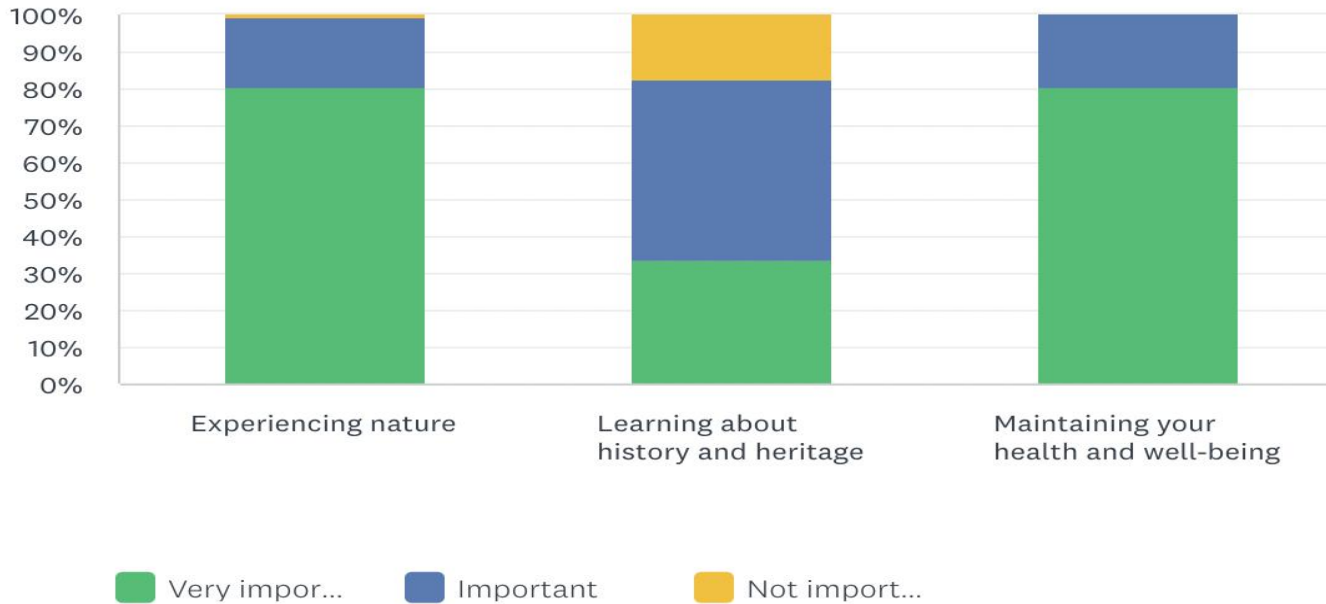
Beautiful green space
community events
environment
relax conservatory
activities etc lovely
swans birds variety
feel beauty walk
access great plants
natural also local cafe
around large history
ducks safe
sports place
ponds wildlife
plants trees greenhouse
duck ponds gardens lakes

Beautiful park
walled garden
flower beds
big wetlands
gardens use events
flowers
Green space
open space
playground
ponds
beautiful trees
community cafe
see peaceful family
beautiful gardens
beautiful flowers

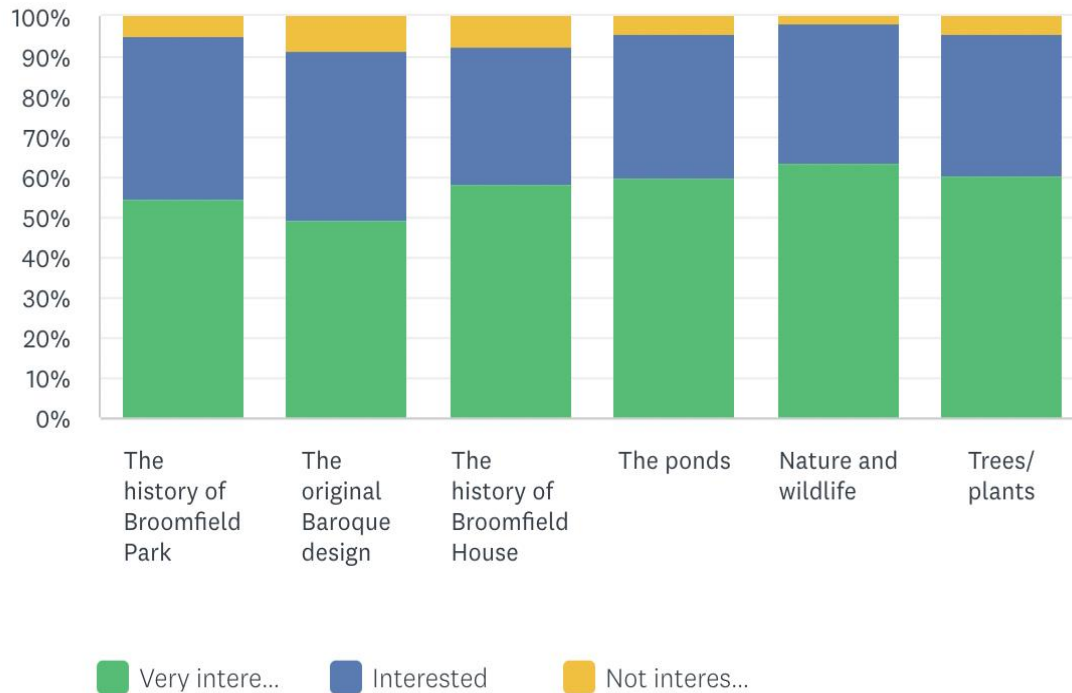
dog walking
bandstand
interest
enjoy open
facilities
greenery
space park
love water
nature reviews kids lots
area play area
lakes wildlife
lakes good quiet well
wildlife Nice Green
house orchard size
open green space
well maintained
boating lake exercise
different areas

surroundings tranquil
Broomfield House Peace
tennis courts
field diversity
varied friends
Clean
play area
wildlife
well maintained
exercise

What is Important to You?



How interested are you in learning more about....



How do you want to learn more:

1. Heritage/ cultural events
2. Information panels
3. Self-guided trails

How communities will be involved in the Development Phase

- Murals
- Wellbeing activities
- Community archaeology
- Broomfield House memorialisation ideas
- Schools

How communities will be involved in the Delivery Phase

- Programme of heritage and cultural events
- Community outreach projects
- Programme of accessible tours and activities for adults, young people and children
- Activities to enable young people to develop skills
- The co-curation of family activities and resources
- School projects
- Learning for life opportunities
- Paid training opportunities and accessible work opportunities
- New volunteering opportunities

Questions?

